

Sun Special

SSTC3-P445/P445B

Cylinder Bed Compound Feed Sewing Machine

SSTC3-P445V/P445VB

Cylinder Bed Compound Feed Binding Machine

OPERATION INSTRUCTION / PARTS MANUAL

Thank you very much for buying our company's sewing machine. Before using your new machine. Please read the safety instructions below and the explanations given in the instruction manual.

With industrial sewing machines, it is normal to carry out work while positioned directly in front of moving parts such as the needle and thread take-up lever, and consequently there is always a danger of injury that can be caused by these parts. Follow the instructions from training personnel and instructors regarding safe and correct operation before operation before operating the machine so that you will know how to use it correctly.

SAFETY INSTRUCTIONS

1. Safety indications and their meanings

This instruction manual and the indications and symbols that are used on the machine itself are provided in order to ensure safe operation of this machine and to prevent accidents and injury to yourself or other people. The meanings of these indications and symbols are given below.

Indications



CAUTION

The instructions which follow this term indicate situations where failure to follow the instructions could cause injury when using the machine or physical damage to equipment and surroundings.

Symbols



This symbol (\triangle) indicates something that you should be careful of. The picture inside the triangle indicates the nature of the caution that must be taken.
(For example, the symbol at left means "beware of injury".)



.....This symbol (\bullet) indicates something that you must not do.



This symbol (\bullet) indicates something that you must do. The picture inside the circle indicates the nature of the thing that must be done.
(For example, the symbol at left means "you must make the ground connection.")

NOTE ON SAFETY

WARNING











Do not put your hand into any openings near the belt. As your hands could get caught in the belt, and serious injury could result.












CAUTION

Environmental requirements

-  Use the sewing machine in an area which is free from sources of strong electrical noise such as high - frequency welders. Sources of strong electrical noise may cause problems with correct operation.
-  The ambient temperature should be within the range of 5°C to 35°C during use.
Temperatures which are lower or higher than this may cause problems with correct operation.
-  Any fluctuations in the power supply voltage should be within +10% of the rated voltage for the machine.
Voltage fluctuations which are greater than this may cause problems with correct operation.
-  The relative humidity should be within the range of 45% to 85% during use, and no dew formation should occur in any devices.
Excessively dry or humid environments and dew formation may cause problems with correct operation.
-  The power supply capacity should be greater than the requirements for the sewing machine's electrical consumption.
Insufficient power supply capacity may cause problems with correct operation.
-  Avoid exposure to direct sunlight during use.
Exposure to direct sunlight may cause problems with correct operation.
-  The pneumatic delivery capability should be greater than the requirements for the sewing machine's total air consumption.
Insufficient pneumatic delivery capability may cause problems with correct operation.
-  In the event of an electrical storm, turn off the power and disconnect the power cord from the wall outlet.
Lightning may cause problems with correct operation.

Installation

-  Machine installation should only be carried out by a qualified technician.
-  All cords should be secured at least 25 mm away from any moving parts. Furthermore, do not excessively bend the cords or secure them too firmly with staples, otherwise there is the danger that fire or electric shocks could occur.
-  Contact your Brother dealer or a qualified electrician for any electrical work that may need to be done.
-  Install the belt covers to the machine head and motor.
-  The sewing machine weighs is so heavy, that the installation should be carried out by two or more people.
-  If using a work table which has casters, the casters should be secured in such a way so that they cannot move.
-  Do not connect the power cord until installation is complete, otherwise the machine may operate if the treadle is depressed by mistake, which could result in injury.
-  Be sure to wear protective goggles and gloves when handling the lubricating oil, so that no oil gets into your eyes or onto your skin, otherwise inflammation can result.
Furthermore, do not drink the oil under any circumstances, as it can cause vomiting and diarrhoea.
Keep the oil out of the reach of children.
-  Be sure to connect the ground. If the ground connection is not secure, you run a high risk of receiving a serious electric shock, and problems with correct operation may also occur.

⚠ CAUTION

Sewing



This sewing machine should only be used by operators who have received the necessary training in safe use beforehand.



The sewing machine should not be used for any applications other than sewing.



Be sure to wear protective goggles when using the machine.

If goggles are not worn, there is the danger that if a needle breaks, parts of the broken needle may enter your eyes and injury may result.



Turn off the power switch at the following times. Otherwise the machine may operate if the treadle is depressed by mistake, which could result in injury.

- When threading the needle
- When replacing the bobbin and needle
- When not using the machine and when leaving the machine unattended

* The motor will keep turning even after the power is switched off as a result of the motor's inertia. Wait until the motor stops fully before starting work.



If using a work table which has casters, the casters should be secured in such a way so that they cannot move.



Attach all safety devices before using the sewing machine. If the machine is used without these devices attached, injury may result.



Do not touch any of the moving parts or press any objects against the machine while sewing, as this may result in personal injury or damage to the machine.



If an error occurs in machine, or if abnormal noises or smells are noticed, immediately turn off the power switch. Then contact your nearest dealer or a qualified technician.



If the machine develops a problem, contact your nearest dealer or a qualified technician.

Cleaning



Turn off the power switch before carrying out cleaning. otherwise the machine may operate if the treadle is depressed by mistake, which could result in injury.

* The motor will keep turning even after the power is switched off as a result of the motor's inertia. Wait until the motor stops fully before starting work.



Be sure to wear protective goggles and gloves when handling the lubricating oil, so that no oil gets into your eyes or onto your skin, otherwise inflammation can result.

Furthermore, do not drink the oil under any circumstances, as it can cause vomiting and diarrhoea. Keep the oil out of the reach of children.

Maintenance and inspection



Maintenance and inspection of the sewing machine should only be carried out by a qualified technician.



Ask your dealer or a qualified electrician to carry out any maintenance and inspection of the electrical system.



Turn off the power switch and disconnect the power cord from the wall outlet at the following times, otherwise the machine may operate if the treadle is depressed by mistake, which could result in injury.

- When carrying out inspection, adjustment and maintenance
- When replacing consumable parts such as the looper and knife

* The motor will keep turning even after the power is switched off as a result of the motor's inertia. Wait until the motor stops fully before starting work.

Disconnect the air hoses from the air supply and wait for



If the power switch and air need to be left on when carrying out some adjustment, be extremely careful to observe all safety precautions.



the needle on the pressure gauge to drop to "0" before carrying out inspection, adjustment and repair of any parts which use pneumatic equipment.



Use only the proper replacement parts as specified by our company.



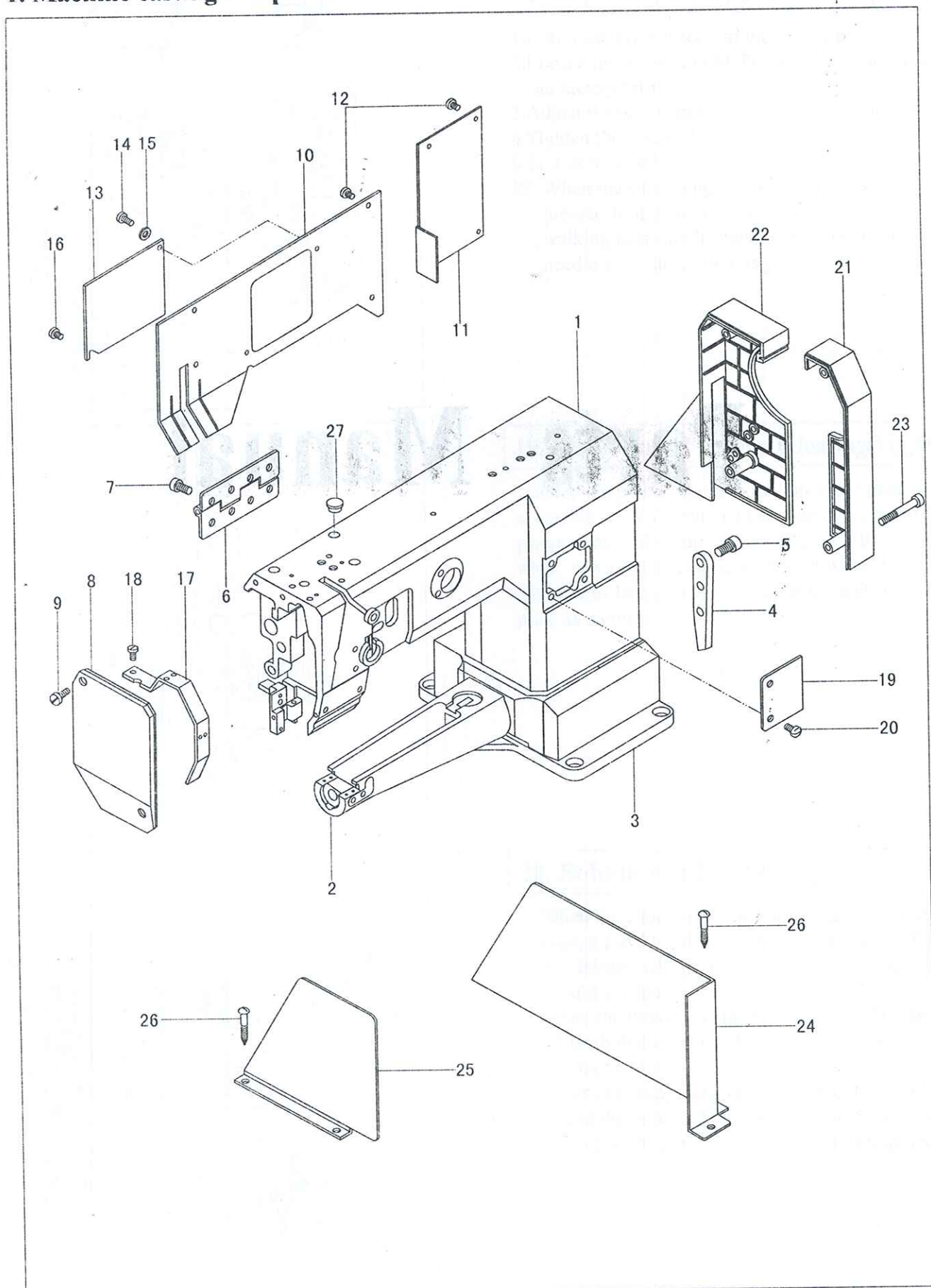
If any safety devices have been removed, be absolutely sure to re-install them to their original positions and check that they operate correctly before using the machine.



Any problems in machine operation which result from unauthorized modifications to the machine will not be covered by the warranty.

Parts Manual

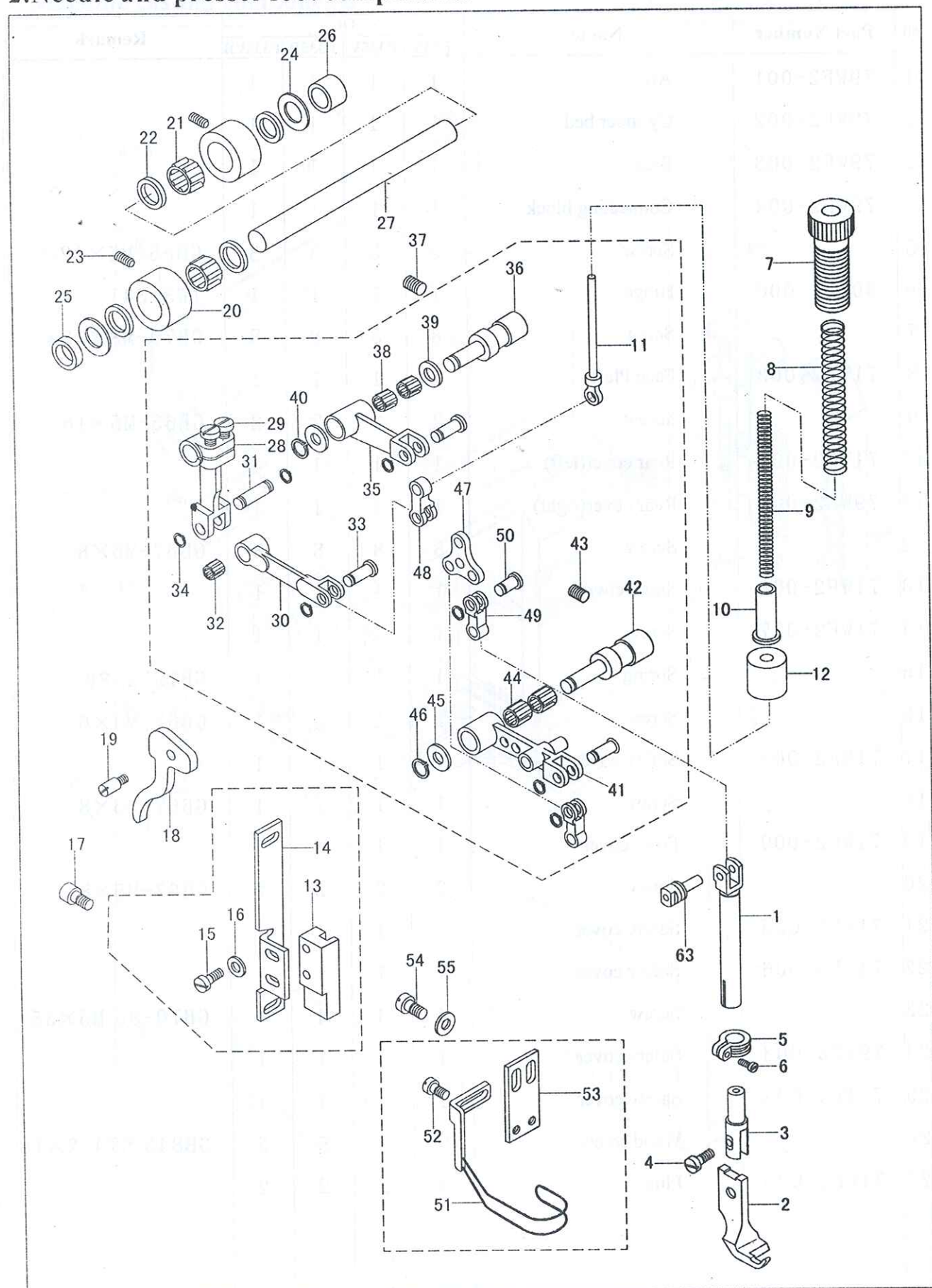
1. Machine casting components



1. Machine casting components

NO.	Part Number	Name	Qt.				Remark
			P335	P335V	P335B	P335VB	
1	79WF2-001	Arm	1	1	1	1	
2	79WF2-002	Cylinder bed	1	1	1	1	
3	79WF2-003	Base	1	1	1	1	
4	79WF2-004	Connecting block	1	1	1	1	
5		Screw	3	3	3	3	GB65-M5×12
6	50WF2-006	Hinge	1	1	1	1	TW3-341
7		Screw	8	8	8	8	GB70-M8×15
8	71WF2-003	Face Plate	1	1	1	1	
9		Screw	2	2	2	2	GB65-M5×16
10	71WF2-004	Rear cover(left)	1	1	1	1	
11	79WF2-005	Rear cover(right)	1	1	1	1	
12		Screw	8	8	8	8	GB67-M5×8
13	71WF2-006	Small cover	1	1	1	1	
14	71WF2-007	Screw	1	1	1	1	
15		Spring	1	1	1	1	GB1972-80
16		Screw	1	1	1	1	GB67-M4×6
17	71WF2-008	Safety cover	1	1	1	1	
18		Screw	1	1	1	1	GB67-M5×8
19	71WF2-009	Front cover	1	1	1	1	
20		Screw	2	2	2	2	GB67-M5×8
21	71WF5-005	Safety cover	1	1	1	1	
22	71WF5-006	Safety cover	1	1	1	1	
23		Screw	4	4	4	4	GB70-85 M5×35
24	79WF5-003	Safety cover	1	1	1	1	
25	79WF5-004	Safety cover	1	1	1	1	
26		Wood screw	5	5	5	5	GB845 ST4. 2×18
27	71WF2-025	Plug	2	2	2	2	

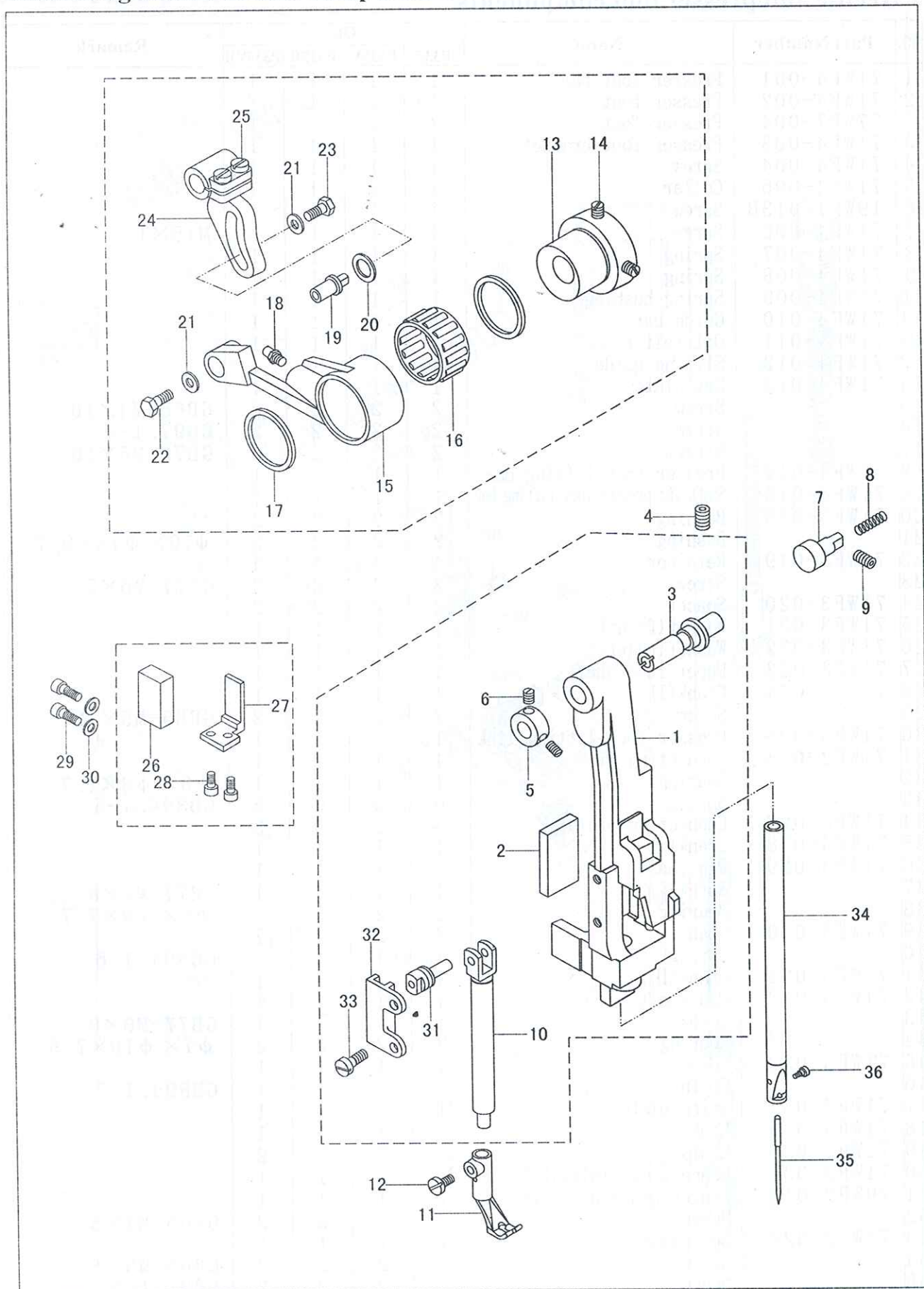
2. Needle and presser foot components



2. Needle and presser foot components

NO.	Part Number	Name	Qt.				Remark
			P335	P335V	P335B	P335VB	
1	71WF4-001	Presser foot bar	1	1	1	1	
2	71WF4-002	Presser foot	1	/	1	/	
	77WF7-004	Presser foot	/	1	/	1	
3	71WF4-003	Presser foot bracket	1	1	1	1	
4	71WF4-004	Screw	1	1	1	1	
5	71WF4-005	Collar	1	1	1	1	
6	19WF1-013B	Screw	1	1	1	1	
7	71WF4-006	Screw	1	1	1	1	M15×1
8	71WF4-007	Spring	1	1	1	1	
9	71WF4-008	Spring	1	1	1	1	
10	71WF4-009	Spring bushing	1	1	1	1	
11	71WF4-010	Guide bar	1	1	1	1	
12	71WF4-011	Oil felt	1	1	1	1	
13	71WF4-012	Sliding guide	1	1	1	1	
14	71WF4-013	Set plate	1	1	1	1	
15		Screw	2	2	2	2	GB65-M4×10
16		Screw	2	2	2	2	GB97.1-4
17		Screw	2	2	2	2	GB70-M5×10
18	71WF4-014	Presser foot lifting bar	1	1	1	1	
19	71WF4-015	Shaft for presser foot lifting bar	1	1	1	1	
20	71WF3-018	Bushing	2	2	2	2	
21		Bushing	2	2	2	2	Φ10×Φ13×9.7
22	71WF3-019	Retainer	4	4	4	4	
23		Screw	2	2	2	2	GB77-M6×5
24	71WF3-020	Spacer	2	2	2	2	
25	71WF3-021	Washer(front)	1	1	1	1	
26	71WF3-022	Washer(rear)	1	1	1	1	
27	71WF3-023	Upper feed shaft	1	1	1	1	
28	71WF3-024	Crank(I)	1	1	1	1	
29		Screw	2	2	2	2	GB65-M5×12
30	71WF3-025	Presser foot lifting link	1	1	1	1	
31	71WF3-026	Connecting pin	1	1	1	1	
32		Bearing	1	1	1	1	Φ5×Φ8×7.7
33		Spring	6	6	6	6	GB894.1-5
34	71WF3-027	Connecting pin(big)	3	3	3	3	
35	71WF3-028	Crank(II)	1	1	1	1	
36	71WF3-029	Pin shaft	1	1	1	1	
37		Screw	1	1	1	1	GB77-M6×8
38		Bearing	2	2	2	2	Φ6×Φ9×7.7
39	71WF3-030	Spacer	2	2	2	2	
40		Spring	1	1	1	1	GB894.1-6
41	71WF3-031	Crank(III)	1	1	1	1	
42	71WF3-032	Pin shaft	1	1	1	1	
43		Screw	1	1	1	1	GB77-M6×8
44		Bearing	2	2	2	2	Φ7×Φ10×7.5
45	71WF3-033	Spacer	1	1	1	1	
46		Spring	1	1	1	1	GB894.1-7
47	71WF3-034	Swing plate	1	1	1	1	
48	71WF3-035	Link	1	1	1	1	
49	71WF3-036	Link	2	2	2	2	
50	71WF3-037	Connecting pin(small)	1	1	1	1	
51	79WF2-014	Finger guard assembly	1	1	1	1	
52		Screw	2	2	2	2	GB65-M4×8
53	71WF2-024	Set plate	1	1	1	1	
54		Screw	2	2	2	2	GB65-M5×8
55		Spacer	2	2	2	2	GB97.1-5

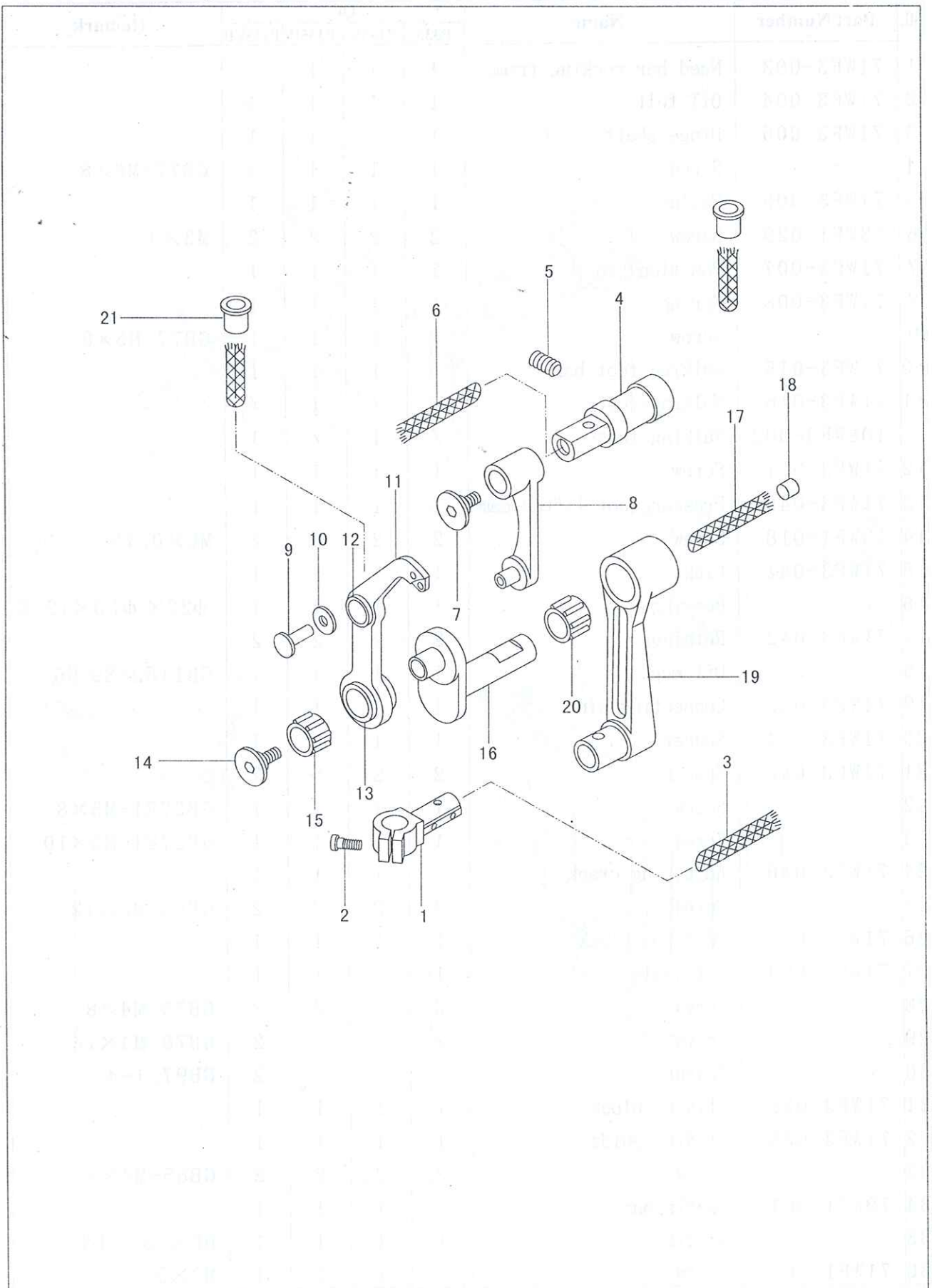
3. Rocking shaft bracket components



3. Rocking shaft bracket components

NO.	Part Number	Name	Qt.				Remark
			P335	P335V	P335B	P335VB	
1	71WF3-003	Need bar rocking frame	1	1	1	1	
2	71WF3-004	Oil felt	1	1	1	1	
3	71WF3-005	Hinge shaft	1	1	1	1	
4		Screw	1	1	1	1	GB77-M6×8
5	71WF3-006	Collar	1	1	1	1	
6	13WF1-029	Screw	2	2	2	2	M3×3
7	71WF3-007	Position pin	1	1	1	1	
8	71WF3-008	Spring	1	1	1	1	
9		Screw	1	1	1	1	GB77-M5×8
10	71WF3-015	walking foot bar	1	1	1	1	
11	71WF3-016	Walking foot	1	/	1	/	
	108WF3-002	Walking foot	/	1	/	1	
12	71WF3-017	Screw	1	1	1	1	
13	71WF3-040	Presser foot lifter cam	1	1	1	1	
14	13WF1-018	Screw	2	2	2	2	M6×0.75
15	71WF3-041	Link	1	1	1	1	
16		Bearing	1	1	1	1	Φ22×Φ26×12.6
17	71WF3-042	Retainer	2	2	2	2	
18		Oil cup	1	1	1	1	GB1152-89 M6
19	71WF3-043	Connecting pin	1	1	1	1	
20	71WF3-044	Spacer	1	1	1	1	
21	71WF3-045	Spacer	2	2	2	2	
22		Screw	1	1	1	1	GB5781-M5×8
23		Screw	1	1	1	1	GB5781-M5×10
24	71WF3-046	Adjusting crank	1	1	1	1	
25		Screw	2	2	2	2	GB65-M5×12
26	71WF3-083	Position block	1	1	1	1	
27	71WF3-084	Set plate	1	1	1	1	
28		Screw	2	2	2	2	GB70-M4×8
29		Screw	2	2	2	2	GB70-M4×16
30		Spacer	2	2	2	2	GB97.1-4
31	71WF3-038	Sliding block	1	1	1	1	
32	71WF3-039	Sliding guide	1	1	1	1	
33		Screw	2	2	2	2	GB65-M4×8
34	79WF1-001	Needle bar	1	1	1	1	
35		Needle	1	1	1	1	DP×35 16#
36	71WF1-003	Screw	1	1	1	1	M3×5

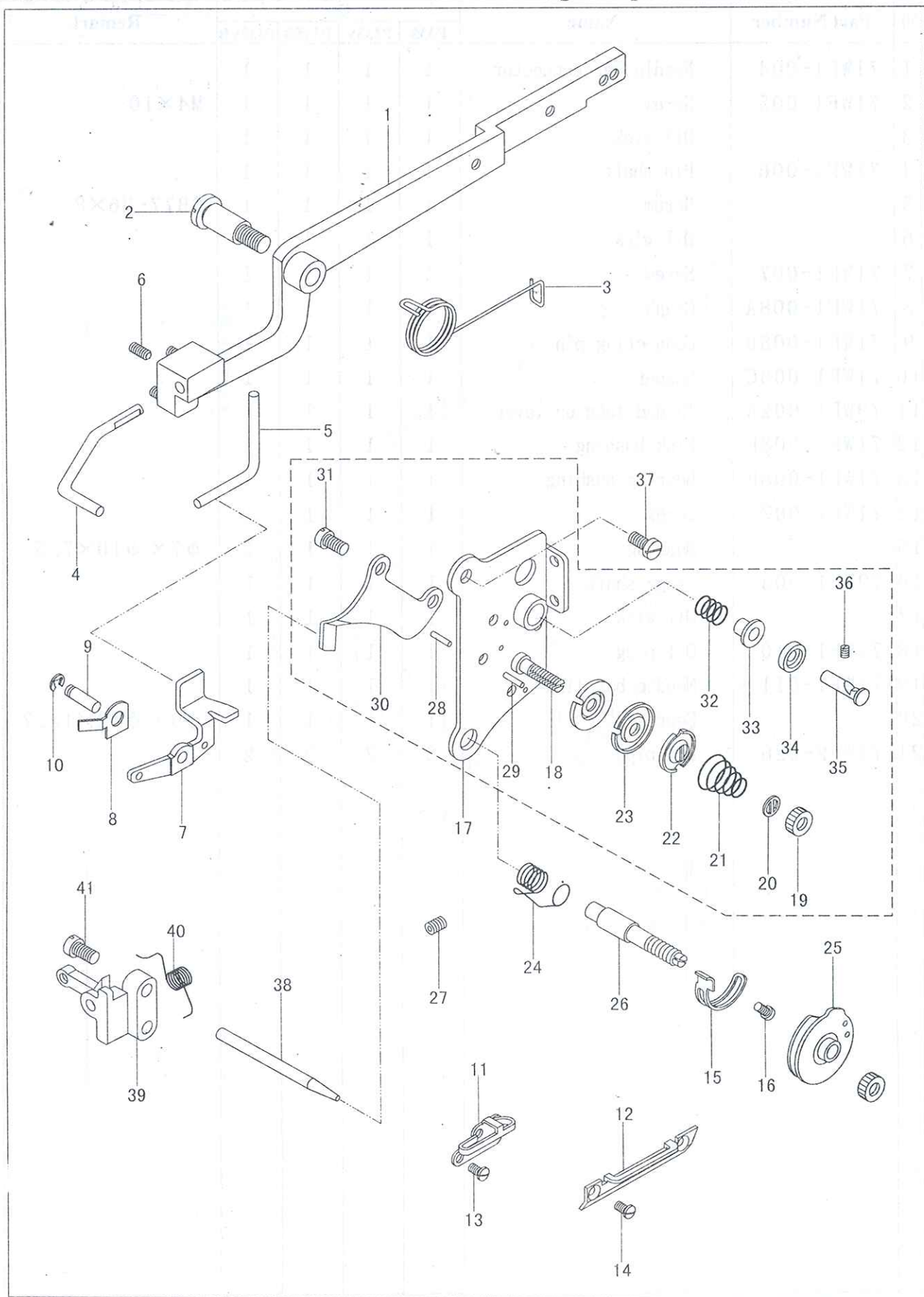
4.Thread take-up components



4.Thread take-up components

NO.	Part Number	Name	Qt.				Remark
			P335	P335V	P335B	P335VB	
1	71WF1-004	Needle bar connector	1	1	1	1	M4×10
2	71WF1-005	Screw	1	1	1	1	
3		Oil wick	1	1	1	1	
4	71WF1-006	Pin shaft	1	1	1	1	GB77-M6×8
5		Screw	1	1	1	1	
6		Oil wick	1	1	1	1	
7	71WF1-007	Screw	1	1	1	1	
8	71WF1-008A	Crank	1	1	1	1	
9	71WF1-008B	Connecting pin	1	1	1	1	
10	71WF1-008C	Spacer	1	1	1	1	
11	79WF1-002A	Thread take-up lever	1	1	1	1	
12	71WF1-008E	Link bushing	1	1	1	1	
13	71WF1-008F	Bearing bushing	1	1	1	1	
14	71WF1-007	Screw	1	1	1	1	
15		Bearing	1	1	1	1	
16	79WF1-003	Hinge shaft	1	1	1	1	Φ7× Φ10×7.5
17		Oil wick	1	1	1	1	
18	71WF1-010	Oil plug	1	1	1	1	
19	71WF1-011	Needle bar link	1	1	1	1	Φ9× Φ12×12.7
20		Bearing	1	1	1	1	
21	71WF2-026	Oil pipe	2	2	2	2	

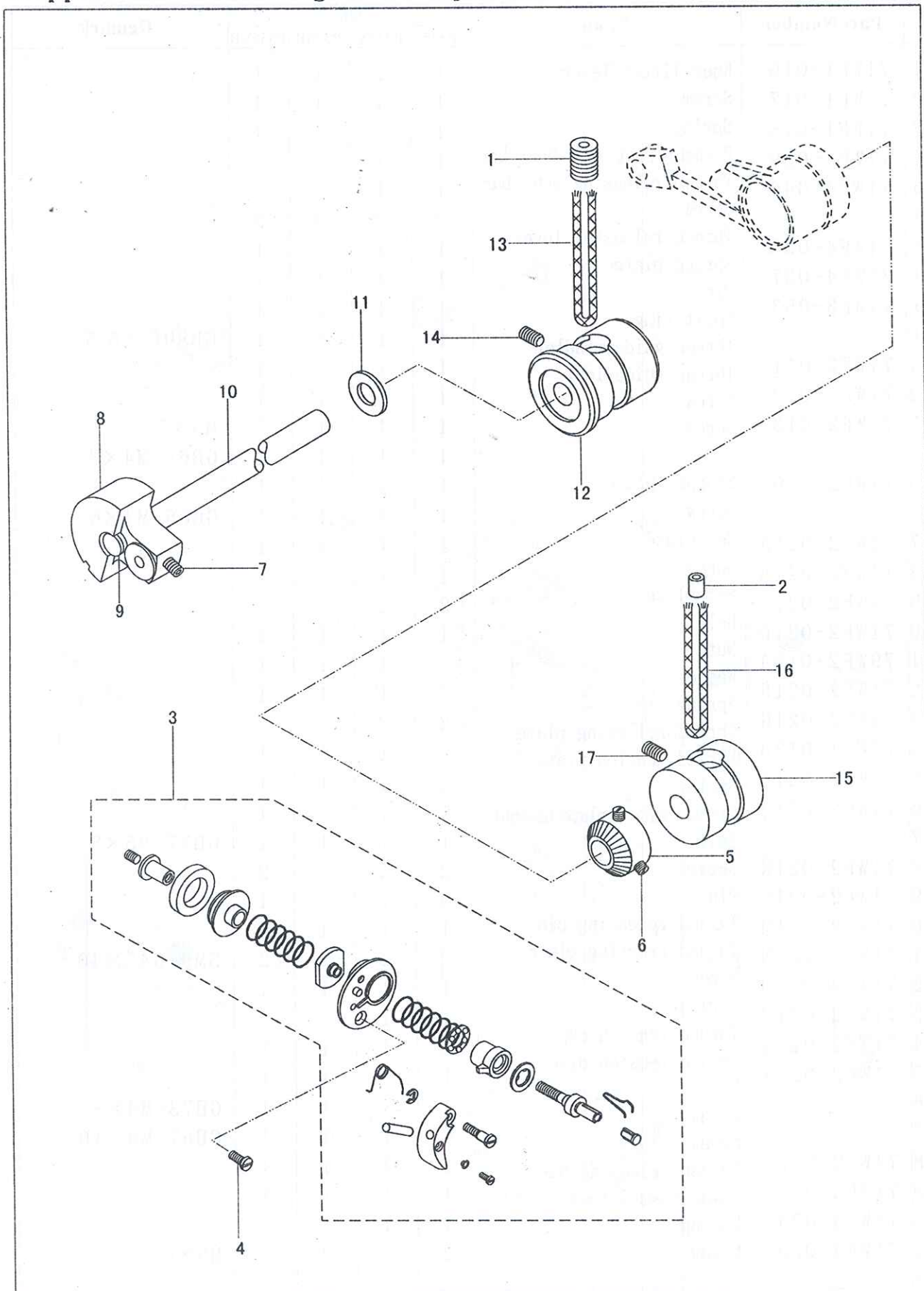
5.Thread tension and thread tension releasing components



5.Thread tension and thread tension releasing components

NO.	Part Number	Name	Qt.				Remark
			P335	P335V	P335B	P335VB	
1	71WF1-016	Knee lifter lever	1	1	1	1	
2	71WF1-017	Screw	1	1	1	1	
3	71WF1-018	Spring	1	1	1	1	
4	71WF4-039	Presser foot lift bent bar	1	1	1	1	
5	71WF4-040	Thread releasing bent bar	1	1	1	1	
6		Screw	3	3	3	3	
7	71WF4-036	Thread releasing lever	1	1	1	1	
8	71WF4-037	Spring plate	1	1	1	1	
9	71WF3-053	Pin	1	1	1	1	
10		Split ring	1	1	1	1	
11	71WF2-011	Thread guide(middle)	1	1	1	1	GB896-86 5
12	71WF2-012	Thread guide(low)	1	1	1	1	
13	71WF2-013	Screw	1	1	1	1	M5×7
14		Screw	1	1	1	1	GB68-M4×8
15	71WF2-016	Stopper plate	1	1	1	1	
16		Screw	1	1	1	1	GB65-M4×6
17	71WF2-021A	Set plate	1	1	1	1	
18	71WF2-021B	Screw	1	1	1	1	
19	71WF2-021C	Set plate	2	2	2	2	
20	71WF2-021D	Bolt	1	1	1	1	
21	79WF2-013A	Nut	1	1	1	1	
22	71WF2-021F	Washer	1	1	1	1	
23	71WF2-021G	Spring	1	1	1	1	
24	71WF2-021H	Thread releasing plate	2	2	2	2	
25	79WF2-013B	Thread tension plate	1	1	1	1	
26	71WF2-021I	Spring	1	1	1	1	
27	71WF2-021J	Thread control plate assembly	1	1	1	1	
28		Bolt	1	1	1	1	GB77-M5×8
29	71WF2-021K	Screw	2	2	2	2	
30	71WF2-021L	Pin	1	1	1	1	
31	71WF2-021M	Thread releasing pin	1	1	1	1	
32	71WF2-021N	Thread erecting plate	2	2	2	2	SM9/64"×40
33	71WF2-021O	Screw	1	1	1	1	
34	71WF2-021P	Spring	1	1	1	1	
35	71WF2-021Q	Thread tension cap	1	1	1	1	
36	71WF2-021R	Thread tension disc	1	1	1	1	
37		Pin	1	1	1	1	
38		Screw	1	1	1	1	GB73-M4×8
39		Screw	1	1	1	1	GB67-M4×10
40	71WF2-022	Thread releasing bar	1	1	1	1	
41	71WF4-033	Thread releasing bracket assembly	1	1	1	1	
42	71WF4-034	Spring	1	1	1	1	
43	71WF4-035	Screw	2	2	2	2	M5×6

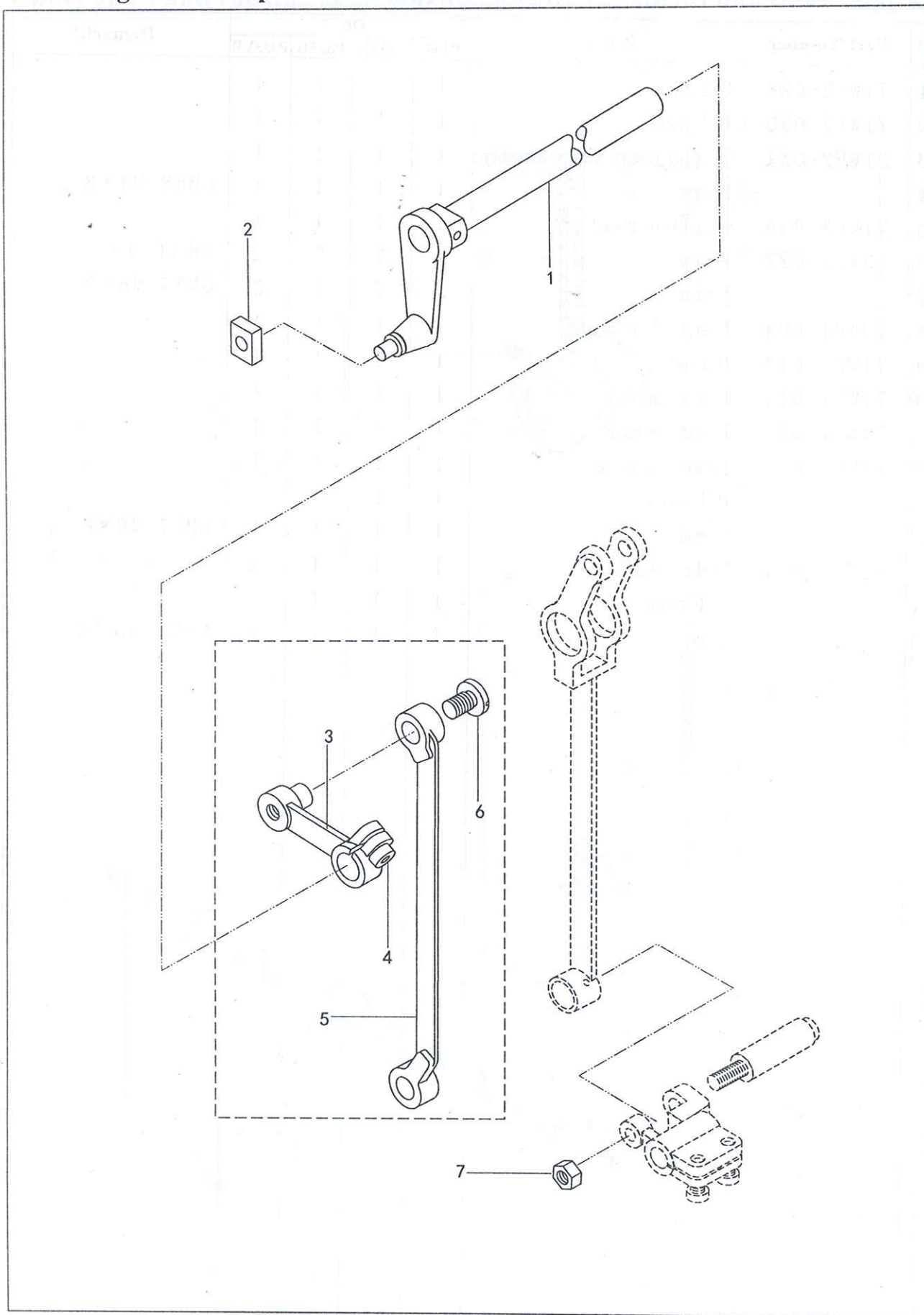
6. Upper shaft and rocking shaft components



6.Upper shaft and rocking shaft components

NO.	Part Number	Name	Qt.				Remark
			P335	P335V	P335B	P335VB	
1	71WF2-029	Oil plug	1	1	1	1	
2	71WF2-030	Oil plug	1	1	1	1	
3	71WF2-034	Oil plug bobbin winder assembly	1	1	1	1	
4		Screw	1	1	1	1	GB68-M4×8
5	71WF2-035	Friction wheel	1	1	1	1	
6	13WF1-027	Screw	2	2	2	2	M6×0.75
7		Screw	2	2	2	2	GB77-M6×5
8	79WF1-004	Needle bar crank	1	1	1	1	
9	71WF1-013	Oil plug	1	1	1	1	
10	71WF1-014	Upper shaft	1	1	1	1	
11	71WF1-015	Front spacer	1	1	1	1	
12	71WF1-016	Front bushing	1	1	1	1	
13		Oil wick	1	1	1	1	
14		Screw	1	1	1	1	GB77-M6×8
15	71WF1-017	Middle bushing	1	1	1	1	
16		Oil wick	1	1	1	1	
17		Screw	1	1	1	1	GB77-M6×8

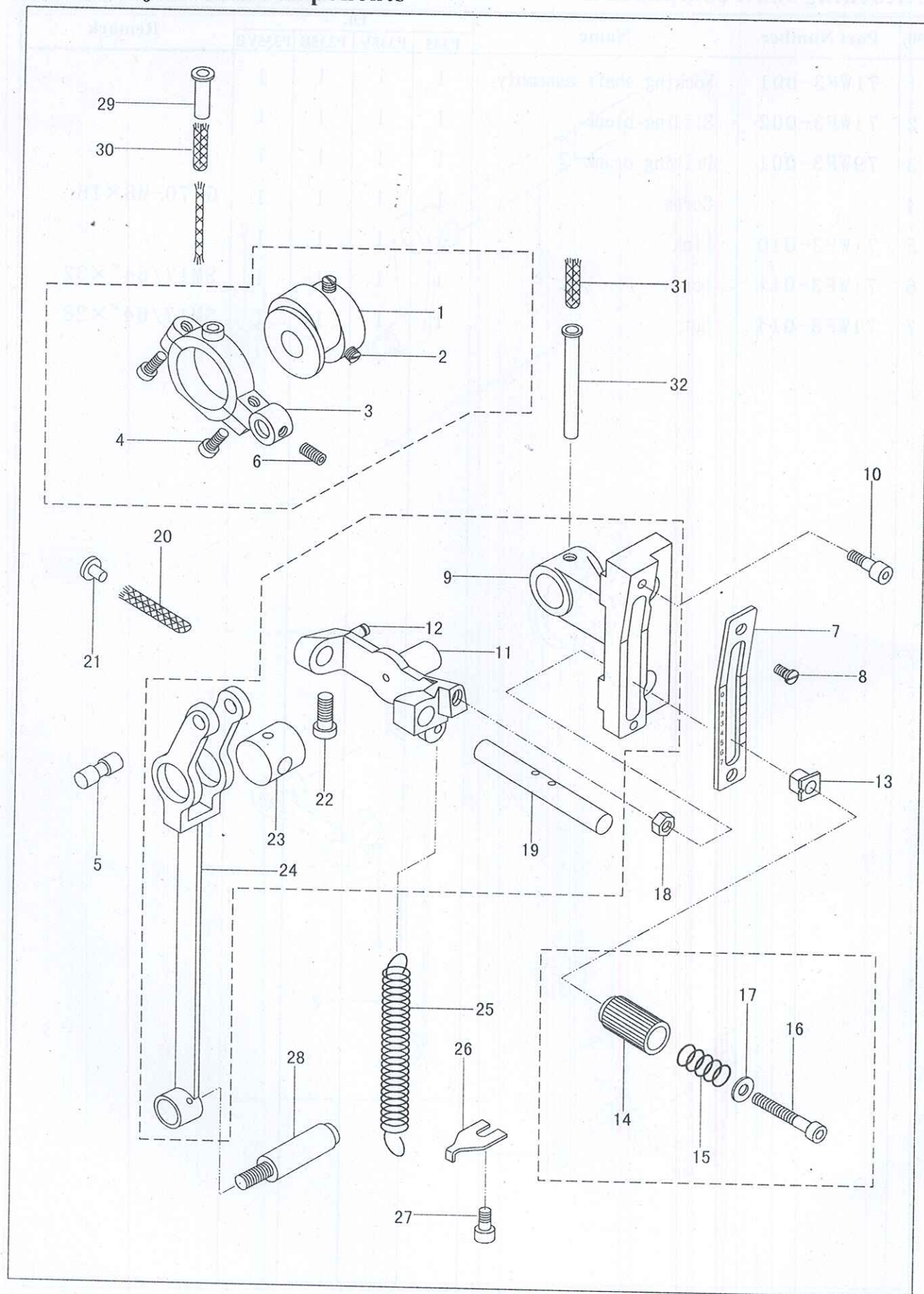
7. Rocking shaft components



7. Rocking shaft components

NO.	Part Number	Name	Qt.				Remark
			P335	P335V	P335B	P335VB	
1	71WF3-001	Rocking shaft assembly	1	1	1	1	
2	71WF3-002	Sliding block	1	1	1	1	
3	79WF3-001	Driving crank	1	1	1	1	
4		Screw	1	1	1	1	GB70-M8×16
5	71WF3-010	Link	1	1	1	1	
6	71WF3-011	Screw	1	1	1	1	SM17/64"×32
7	71WF3-014	Nut	1	1	1	1	SM17/64"×28

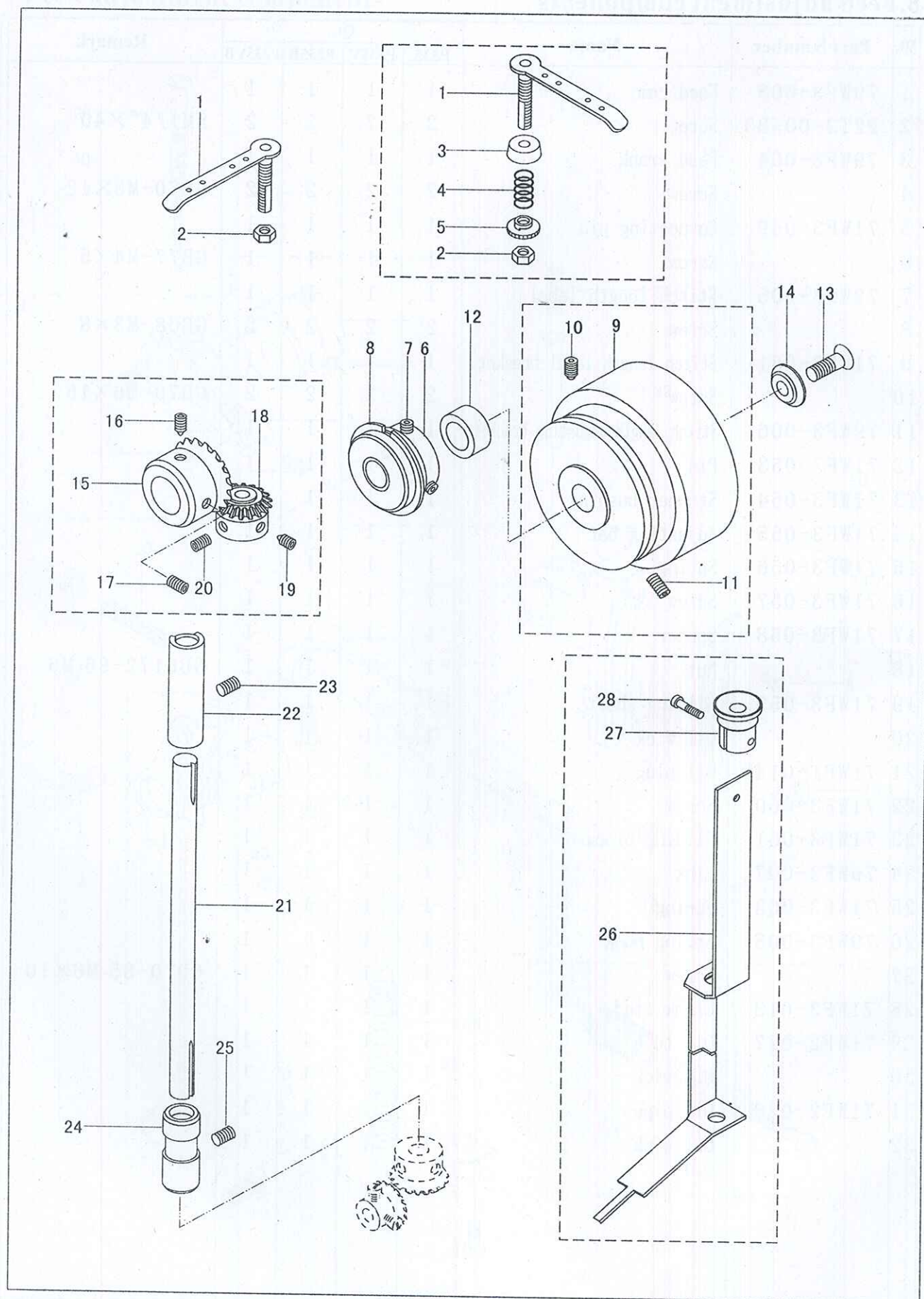
8.Feed adjustment components



8.Feed adjustment components

NO.	Part Number	Name	Qt.				Remark
			P335	P335V	P335B	P335VB	
1	79WF3-003	Feed cam	1	1	1	1	
2	22T2-005B3	Screw	2	2	2	2	SM1/4"×40
3	79WF3-004	Feed crank	1	1	1	1	
4		Screw	2	2	2	2	GB70-M5×12
5	71WF3-049	Connecting pin	1	1	1	1	
6		Screw	1	1	1	1	GB77-M4×5
7	79WF3-005	Stitch length label	1	1	1	1	
8		Screw	2	2	2	2	GB68-M3×8
9	71WF3-051	Stitch length label bracket	1	1	1	1	
10		Screw	2	2	2	2	GB70-M6×16
11	79WF3-006	Stitch length adjusting bracket	1	1	1	1	
12	71WF3-053	Pin	1	1	1	1	
13	71WF3-054	Stopper bushing	1	1	1	1	
14	71WF3-055	Adjusting bar	1	1	1	1	
15	71WF3-056	Spring	1	1	1	1	
16	71WF3-057	Screw	1	1	1	1	
17	71WF3-058	Spacer	1	1	1	1	
18		Nut	1	1	1	1	GB6172-86 M6
19	71WF3-059	Sliding shaft	1	1	1	1	
20		Oil wick	1	1	1	1	
21	71WF1-014	Oil plug	1	1	1	1	
22	71WF3-060	Screw	1	1	1	1	
23	71WF3-061	Sliding block	1	1	1	1	
24	79WF3-007	Link	1	1	1	1	
25	71WF3-063	Spring	1	1	1	1	
26	79WF3-008	Spring hook	1	1	1	1	
27		Screw	1	1	1	1	GB70-85 M6×10
28	71WF3-013	Crank stud	1	1	1	1	
29	71WF2-027	Oil tube	1	1	1	1	
30		Oil wick	1	1	1	1	
31	71WF2-028	Oil pipe	1	1	1	1	
32		Oil wick	1	1	1	1	

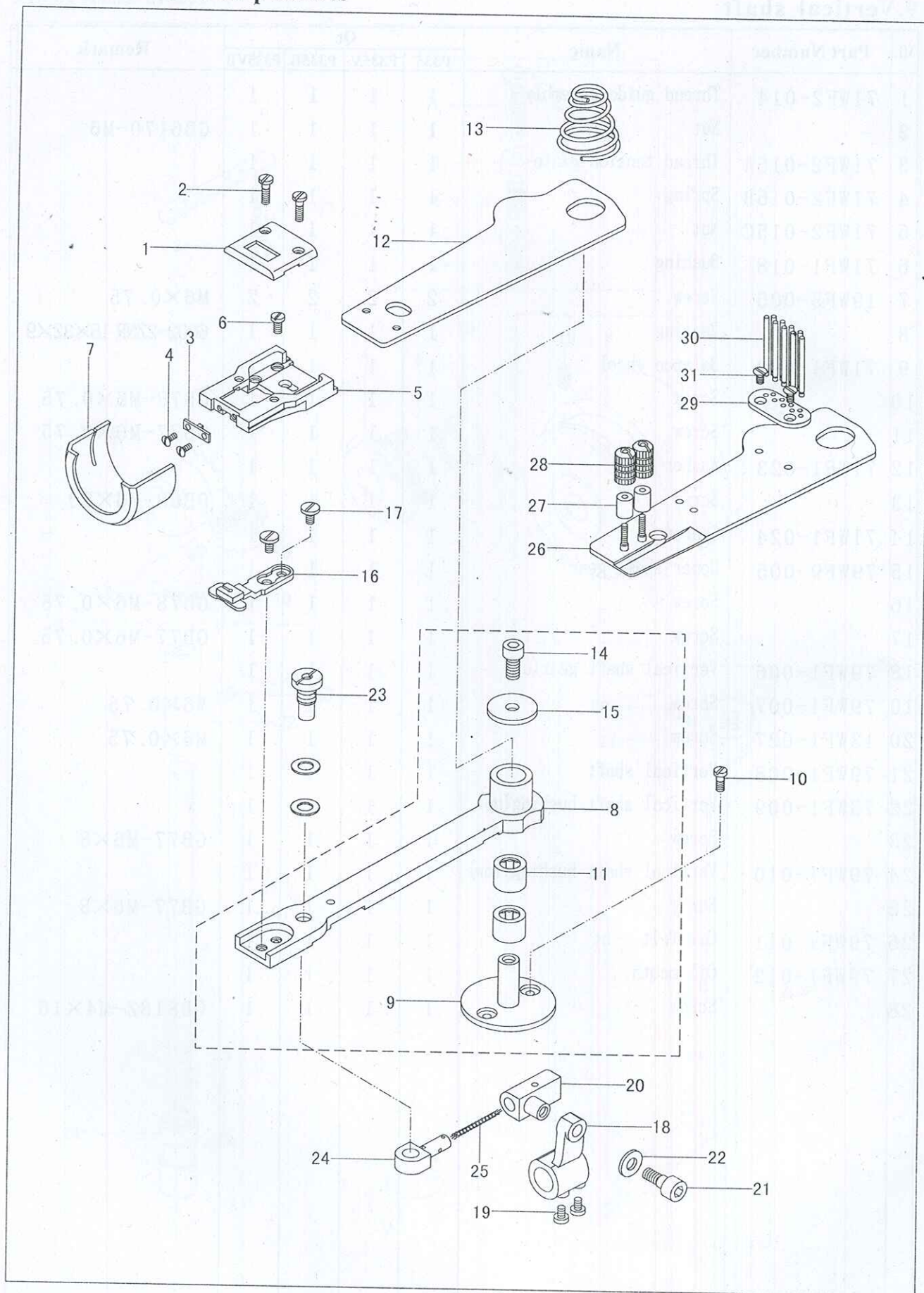
9.Vertical shaft



9.Vertical shaft

NO.	Part Number	Name	Qt.				Remark
			P335	P335V	P335B	P335VB	
1	71WF2-014	Thread guide assembly	1	1	1	1	GB6170-M6
2		Nut	1	1	1	1	
3	71WF2-015A	Thread tension plate	1	1	1	1	
4	71WF2-015B	Spring	1	1	1	1	M6×0.75
5	71WF2-015C	Nut	1	1	1	1	
6	71WF1-018	Bushing	1	1	1	1	
7	19WF3-005	Screw	2	2	2	2	6002-2ZNR 15×32×9
8		Bearing	1	1	1	1	
9	71WF1-022	Balance wheel	1	1	1	1	
10		Screw	1	1	1	1	GB78-M6×0.75
11		Screw	1	1	1	1	GB77-M6×0.75
12	71WF1-023	Washer	1	1	1	1	GB68-M6×20
13		Screw	1	1	1	1	
14	71WF1-024	Spacer	1	1	1	1	
15	79WF9-005	Upper shaft gear	1	1	1	1	GB78-M6×0.75
16		Screw	1	1	1	1	
17		Screw	1	1	1	1	
18	79WF1-006	Vertical shaft gear(up)	1	1	1	1	M6×0.75
19	79WF1-007	Screw	1	1	1	1	
20	13WF1-027	Screw	1	1	1	1	
21	79WF1-008	Vertical shaft	1	1	1	1	GB77-M6×8
22	79WF1-009	Vertical shaft bushing(up)	1	1	1	1	
23		Screw	1	1	1	1	
24	79WF1-010	Vertical shaft bushing(low)	1	1	1	1	GB77-M6×8
25		Screw	1	1	1	1	
26	79WF1-011	Oil felt	1	1	1	1	
27	79WF1-012	Oil mouth	1	1	1	1	GB818Z-M4×16
28		Screw	1	1	1	1	

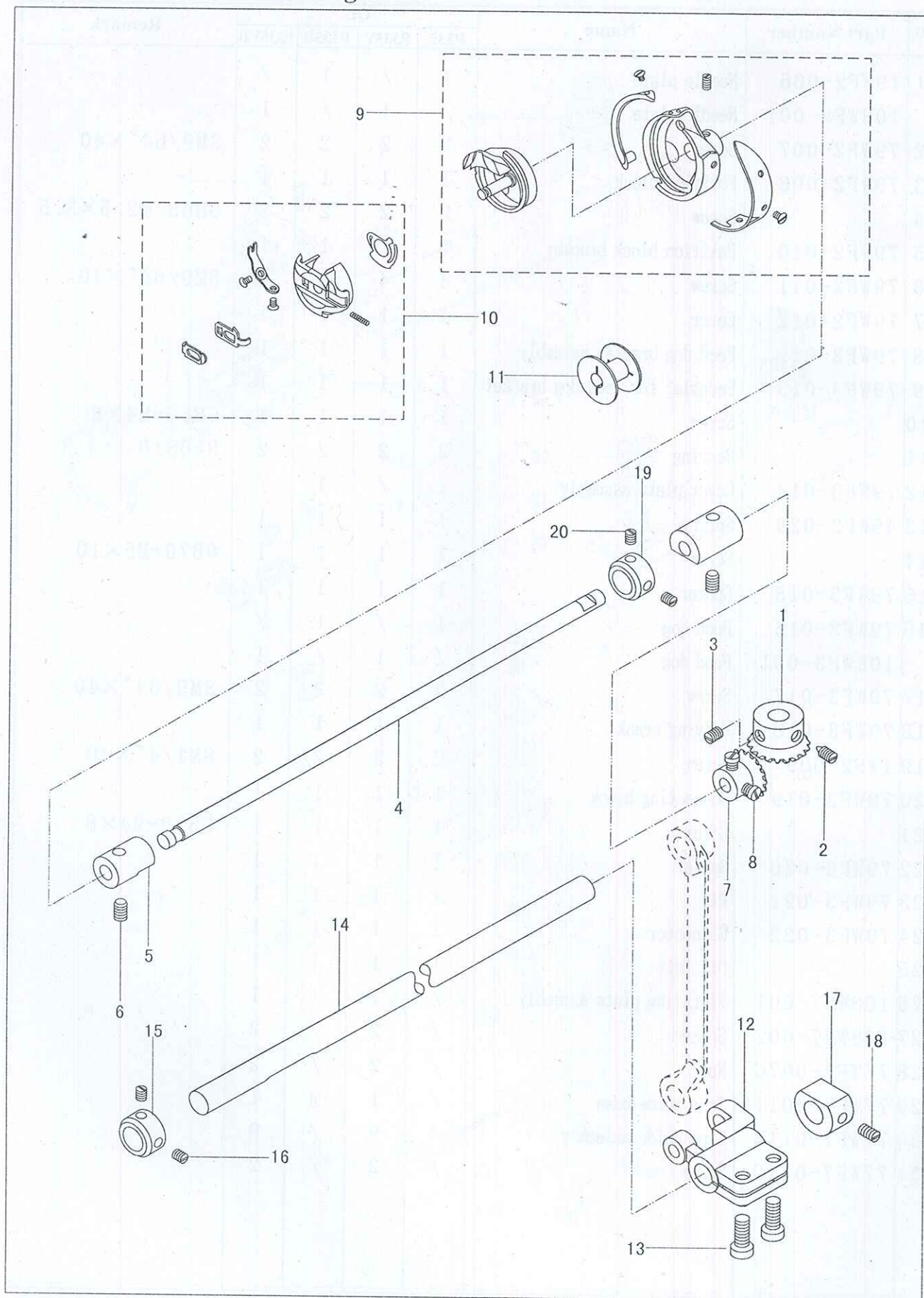
10. Lower feed components



10. Lower feed components

NO.	Part Number	Name	Qt.				Remark
			P335	P335V	P335B	P335VB	
1	79WF2-006	Needle plate	1	/	1	/	
	108WF2-001	Needle plate	/	1	/	1	
2	79WF2-007	Screw	2	2	2	2	SM9/64"×40
3	79WF2-008	Position block	1	1	1	1	GB68-M2.5×3.5
4		Screw	2	2	2	2	
5	79WF2-010	Position block bracket	1	1	1	1	SM9/64"×40
6	79WF2-011	Screw	4	4	4	4	
7	79WF2-012	Cover	1	1	1	1	
8	79WF3-012	Feed dog bracket assembly	1	1	1	1	
9	79WF3-013	Pedestal for feed dog bracket	1	1	1	1	GB65-M4×6
10		Screw	1	1	1	1	
11		Bearing	2	2	2	2	Hk0810
12	79WF3-014	Cover plate assembly	1	/	1	/	GB70-M5×10
13	49WF2-029	Spring	1	1	1	1	
14		Screw	1	1	1	1	
15	79WF3-015	Spacer	1	1	1	1	
16	79WF3-016	Feed dog	1	/	1	/	SM9/64"×40
	108WF3-001	Feed dog	/	1	/	1	
17	79WF3-017	Screw	2	2	2	2	SM1/4"×40
18	79WF3-018	driving crank	1	1	1	1	
19	1WF2-009	Screw	2	2	2	2	GB70-M4×8
20	79WF3-019	Connecting block	1	1	1	1	
21		Screw	1	1	1	1	
22	79WF3-020	Spacer	1	1	1	1	
23	79WF3-021	Pin	1	1	1	1	
24	79WF3-022	Connector	1	1	1	1	
25		Oil felt	1	1	1	1	
26	108WF7-001	Vibrating plate assembly	/	1	/	1	
27	108WF7-002	Spacer	/	2	/	2	
28	77WF7-007C	Nut	/	2	/	2	
29	77WF7-0011A	Tape guide base	/	1	/	1	
30	77WF7-011B	Tape guide assembly	/	9	/	9	
31	77WF7-011C	Screw	/	2	/	2	

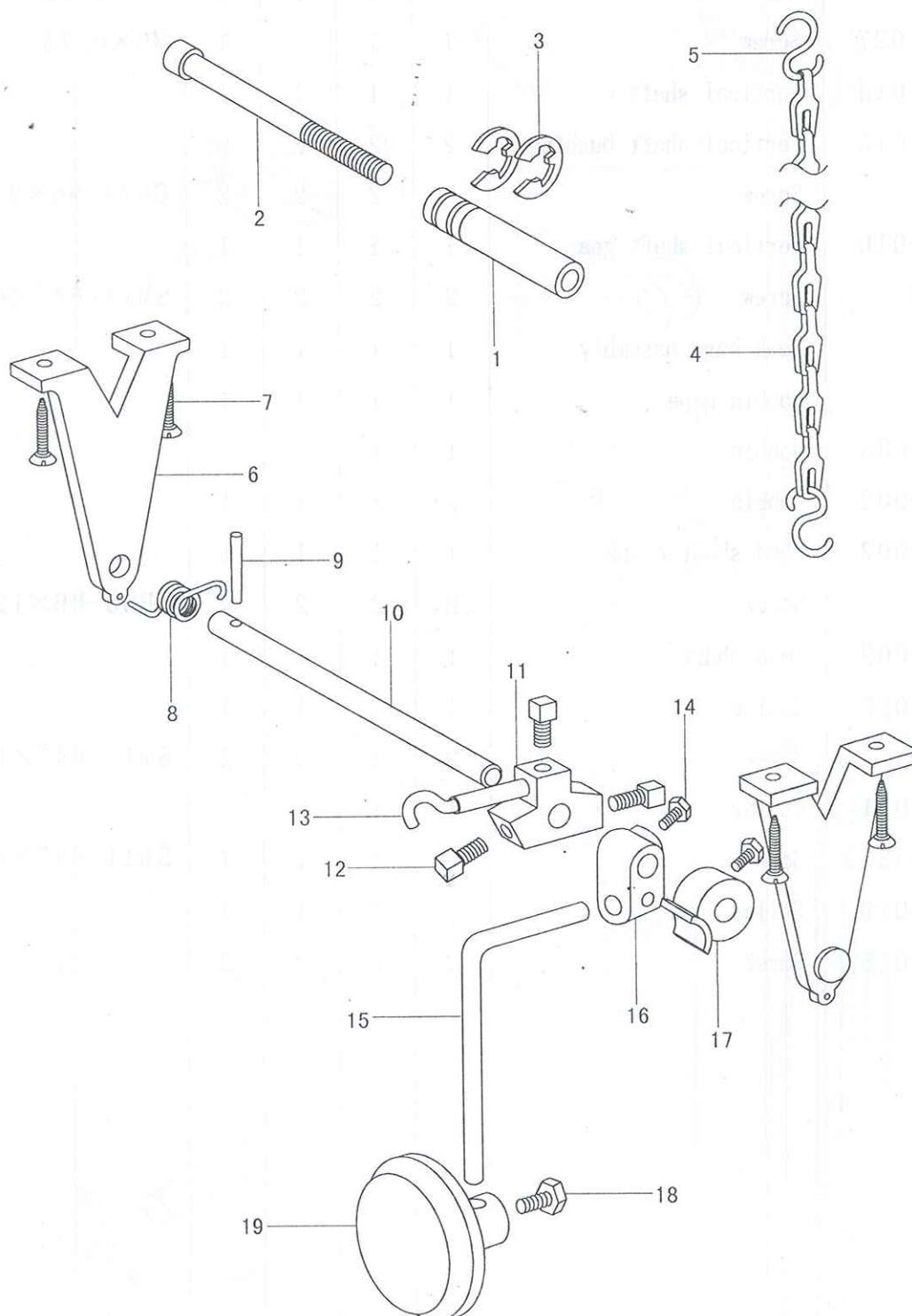
11. Lower shaft and rotating hook



11.Lower shaft and rotating hook

NO.	Part Number	Name	Qt.				Remarks
			P335	P335V	P335B	P335VB	
1	79WF1-013	Vertical shaft gear(low)	1	1	1	1	
2	79WF1-007	Screw	1	1	1	1	M6×0.75
3	13WF1-027	Screw	1	1	1	1	M6×0.75
4	79WF1-014	Vertical shaft	1	1	1	1	
5	79WF1-015	Vertical shaft bushing	2	2	2	2	
6		Screw	2	2	2	2	GB77-M6×8
7	79WF1-016	Vertical shaft gear	1	1	1	1	
8	6A3-07	Screw	2	2	2	2	SM11/64"×40
9		Hook base assembly	1	1	1	1	
10		Bobbin cape	1	1	1	1	
11	49WF1-033	Bobbin	1	1	/	/	
	95WF1-002	Bobbin	/	/	1	1	
12	79WF3-002	Feed shaft crank	1	1	1	1	
13		Screw	2	2	2	2	GB65-M6×12
14	79WF3-009	Feed shaft	1	1	1	1	
15	79WF3-010	Collar	1	1	1	1	
16	01/B904	Screw	2	2	2	2	SM11/64"×40
17	79WF3-011	Collar	1	1	1	1	
18	20T2-032C3	Screw	1	1	1	1	SM11/64"×40
19	79WF1-019	Collar	1	1	1	1	
20	21WF5-018	Screw	2	2	2	2	

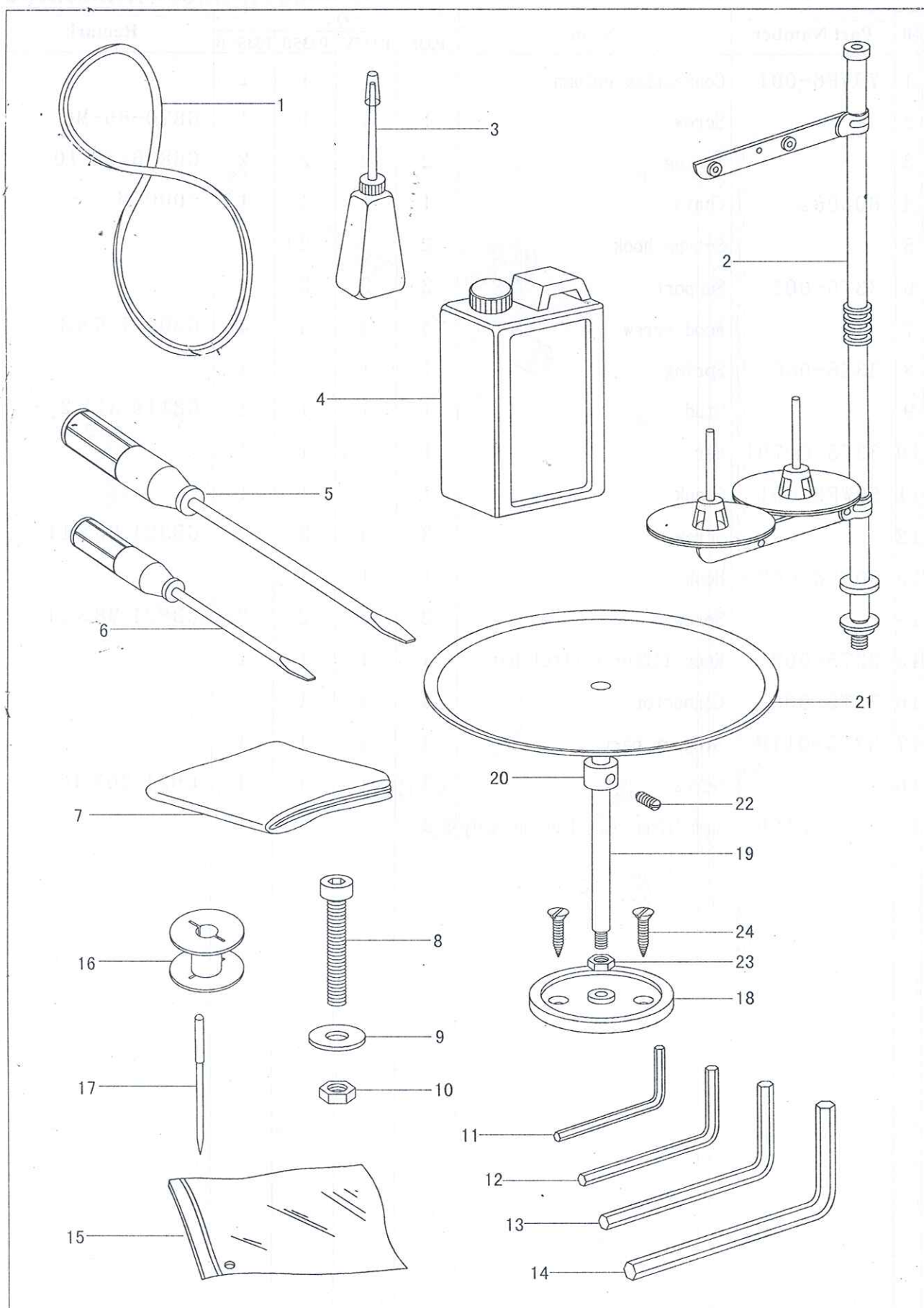
12. Knee lifter control components



12. Knee lifter control components

NO.	Part Number	Name	Qt.				Remark
			P335	P335V	P335B	P335VB	
1	79WF6-001	Connecting column	1	1	1	1	
2		Screw	1	1	1	1	GB70-85-M6
3		Spring	2	2	2	2	GB896-86 10
4	606082	Chain	1	1	1	1	1000CM
5		S-type hook	2	2	2	2	
6	33T5-005	Support	2	2	2	2	
7		Wood screw	4	4	4	4	GB99 ST5×8
8	33T5-006	Spring	1	1	1	1	
9		Stud	1	1	1	1	GB119 31×2
10	33T5-007B1	Bar	1	1	1	1	
11	50WF6-001	Crank	1	1	1	1	
12		Screw	3	3	3	3	GB821 M8×11
13	50WF6-002	Hook	1	1	1	1	
14		Screw	2	2	2	2	GB821 M8×11
15	33T5-009	Knee lifter control bar	1	1	1	1	
16	33T5-008	Connector	1	1	1	1	
17	33T5-011E	Stopper part	1	1	1	1	
18		Screw	1	1	1	1	GB21 M6×10
19	33T5-010F	Knee lifter control bar assembly	1	1	1	1	

13. Accessories



13.Accessories

NO.	Part Number	Name	Qt.				Remark
			P335	P335V	P335B	P335VB	
1		V-belt	1	1	1	1	
2	4F-007	Spool stand assembly	1	1	1	1	
3	33TF-011	Oil pot	1	1	1	1	
4	1F-009	Oil tank	1	1	1	1	
5	33TF-013	Screwdriver(medium)	1	1	1	1	
6	33TF-014	Screwdriver(small)	1	1	1	1	
7	1F-013	Cover	1	1	1	1	
8		Screw	4	4	4	4	
9		Spacer	4	4	4	4	
10		Nut	4	4	4	4	
11		Spanner	1	1	1	1	S=2.5mm
12		Spanner	1	1	1	1	S=3mm
13		Spanner	1	1	1	1	S=4mm
14		Spanner	1	1	1	1	S=5mm
15	33TF-010	Accessory bag	1	1	1	1	
16	49WF1-033	Bobbin	6	/	6	/	
	95WF1-002	Bobbin	/	6	/	6	DP×35 16#
17		Needle	3	3	3	3	
18		Tape tray base assembly	/	1	/	1	
19		Bar	/	1	/	1	
20		Collar	/	1	/	1	
21		Tape tray assembly	/	1	/	1	
22		Screw	/	1	/	1	
23		Nut	/	1	/	1	
24		Screw	/	2	/	2	